

The WABrowser Component Product Sheet

Version: 1.0

Description:

The WABrowser component is an implementation of a browser for xHTML based web pages, which can be easily plugged into an existing application with the help of its very simple interfaces. This component has already been successfully integrated and used by two independent organizations in their application(s).

Features:

- Implementations exist for the following Symbian platforms:
 - **Series60 2nd Edition**
 - **UIQ**
 - **Series80**
 - **Series60 3rd Edition**

- Uses the SyExpat v1.3 parser. Supports only strict xHTML conforming pages.

The following xHTML tags are supported:

- <html>
- <head>
- <meta>
- <title>
- <body>
- <form>
- <input>
- <select>
- <option>
- <h1>
- <h2>
- <h3>
- <h4>
- <h5>
- <h6>
- <i>
-
- <p>
-

-
-
-
- <table>

- <th>
 - <tr>
 - <td>
 -
 - <a>
- **Additional notes on the supported tags:**
 - <meta> -- refreshing or redirecting of pages supported
 - Refresh current page in 10s: <meta http-equiv="refresh" content="10" />
 - Go to an other page in 5 seconds: <meta http-equiv="refresh" content="5;url=http://www.website.com" />
 - <title> -- The page title is displayed in a title bar at the top of the window.
 - <form> -- only the 'get' method is supported
 - <input> -- The following types are supported:
 - type="text"
 - type="checkbox"
 - type="radio"
 - type="password"
 - type="hidden"
 - type="submit"
 - type="reset"
 - <table> -- simple tables are supported; complex tables, like tables within tables are not supported.
 - <a> -- launches the link in the device's default browser if one of the following is mentioned in the tag:
 - target="_blank"
 - rel="_blank"
 - Due to speed concerns the WABrowser version 1.0 currently doesn't support external CSS files; however, the use of the 'style' attribute within tags is supported. (If external CSS is needed this can also be added easily).

The following are the values can be used with the 'style' attribute:

- font-size
- font-weight
- font-style
- color
- background-color
- text-align
- border-spacing (only for tables)
- padding (only for tables)

Values supported in the 'font-size' attribute:

- xx-large
- x-large
- large
- medium
- small

Values supported in the 'font-weight' attribute:

- bold

Values supported in the 'font-style' attribute:

- italic

Values supported in the 'color' and 'background-color' attributes: (The colors can be specified in three ways)

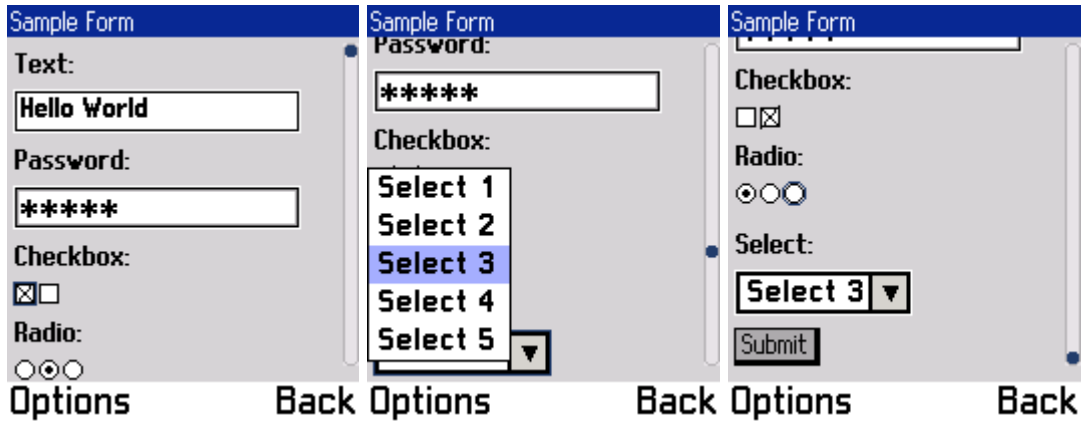
- Directly specify the color
Example: color : rgb(255, 255, 255)
- Specify the hexadecimal value
Example: color : #ffffff
- Specify the name of the color
Example: color : white

Supported color names:

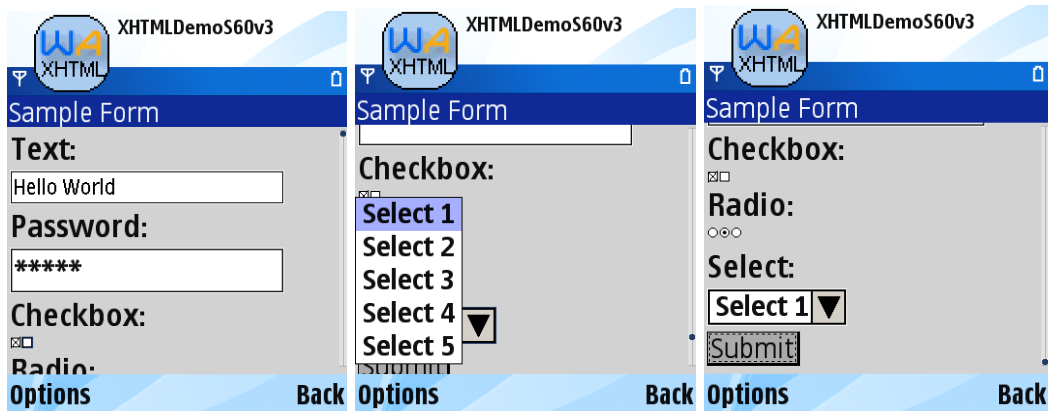
- yellow
- white
- teal
- silver
- red
- purple
- olive
- navy
- maroon
- lime
- green
- gray
- fuchsia
- blue
- black
- aqua

[Sample browser screens:](#)

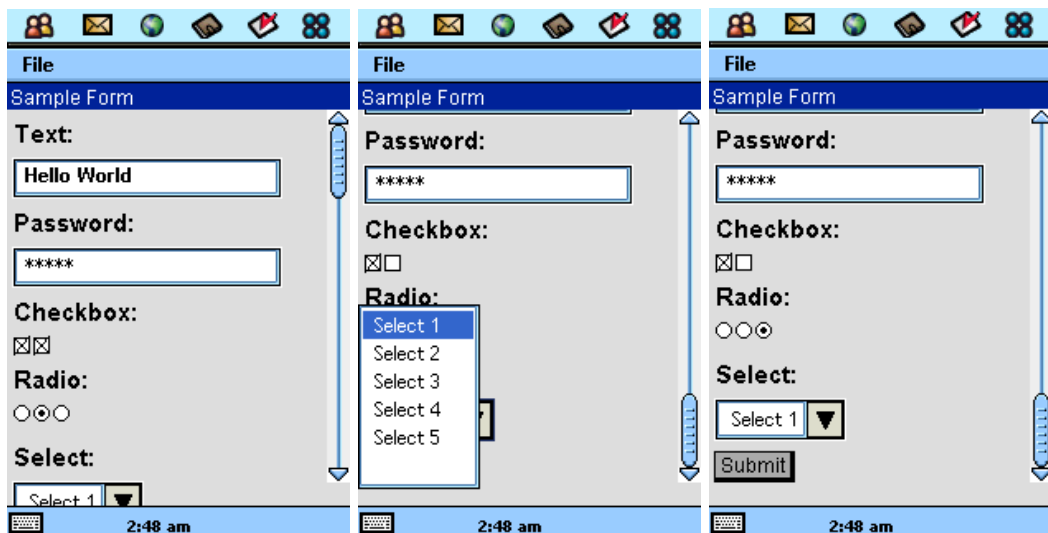
Series 60



Series 60 version 3



UIQ



Series 80

Sample Form

XHTML Demo

4:52 AM

Text: Hello World

Password: *****

Checkbox:

Radio:

Exit

Connect

Sample Form

XHTML Demo

4:52 AM

Checkbox:

Select 1

Select 2

Select 3

Select 4

Select 5

Exit

Connect

Sample Form

XHTML Demo

4:52 AM

Checkbox:

Radio:

Select: Select 1 ▼

Submit

Exit

Connect

Note:

In addition to the default implementation, we can customize the UI and features of the browser for your application needs. The browser can be deeply integrated with your application, for e.g. we can add a new customized tag in an XHTML page, which triggers a particular function or feature of your native application or any system application.

For licensing, customization, porting, development enquires please email us at: info@arisetech.net